

**USDA PROGRAMS**

---

WETLAND RESTORATION  
PROGRAMS IN TENNESSEE  
Fiscal Year 2012  
10/1/2011 – 9/30/2012

---

---

---

---

---

---

---

---

**PROGRAMS FOR WETLANDS  
IN TENNESSEE**

---

**EASEMENT PROGRAMS**

- ❑ WETLANDS RESERVE PROGRAM (WRP)
- ❑ EMERGENCY WATERSHED PROTECTION PROGRAM (FLOODPLAIN EASEMENT)

**RENTAL PROGRAM**

- ❑ CONSERVATION RESERVE PROGRAM (CRP)

**STEWARDSHIP PROGRAM**

- ❑ CONSERVATION STEWARDSHIP PROGRAM (CSP)

**COST SHARE PROGRAM**

- ❑ WILDLIFE HABITAT INCENTIVE PROGRAM (WHIP)

---

---

---

---

---

---

---

---

**EASEMENT PROGRAMS**

---

<b>WRP</b>	<b>EWP FLOODPLAIN</b>
<ul style="list-style-type: none"> <li>❑ Authorized in 1990 farm bill (FACTA)</li> <li>❑ Currently authorized for 3 million acres nationwide</li> <li>❑ TN authorized in 1994</li> <li>❑ Approximately 36,000 acres enrolled through FY11</li> </ul>	<ul style="list-style-type: none"> <li>❑ Authorized in 1996 farm bill (FAIRA)</li> <li>❑ Emergencies from natural disasters</li> <li>❑ TN authorized in 1997</li> <li>❑ Approximately 1,140 acres enrolled between 1997 and 2000; 1,734 acres enrolled in 2010.</li> </ul>

---

---

---

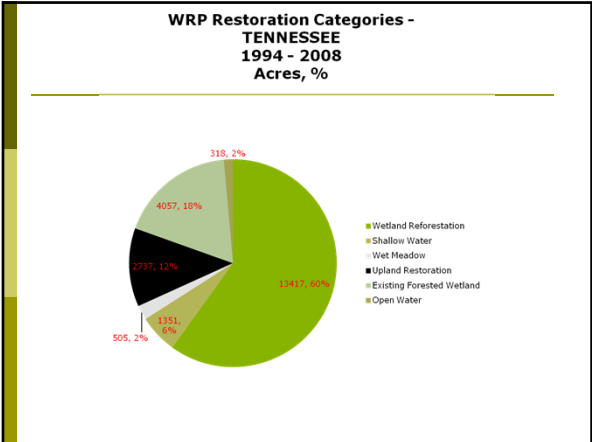
---

---

---

---

---



---

---

---

---

---

---

---

---



---

---

---

---

---

---

---

---



---

---

---

---

---

---

---

---




---

---

---

---

---

---

---

---




---

---

---

---

---

---

---

---




---

---

---

---

---

---

---

---

**30-YEAR EASEMENT**

- 75% OF GEOGRAPHIC RATE CAP, APPRAISED VALUE, OR LANDOWNER OFFER (LESSER OF)
- 75% RESTORATION COST SHARE




---

---

---

---

---

---

---

---

**10 YEAR RESTORATION AGREEMENT**

- 75% RESTORATION COST SHARE




---

---

---

---

---

---

---

---

**RESTORATION REQUIREMENTS**

- Pre-conversion hydrology
- Hydrologic enhancement for targeted species
- Pre-conversion native plant restoration
- 70% reforestation
- 30% open/shallow water/otherwise different native plant communities
- 5% food plots




---

---

---

---

---

---

---

---

**LANDOWNER RESERVED RIGHTS**

- ▣ QUIET ENJOYMENT
- ▣ UNDEVELOPED RECREATION
- ▣ HUNTING
- ▣ FISHING




---

---

---

---

---

---

---

---

**COMPATIBLE USES**

- ▣ TIMBER HARVESTING
- ▣ HAYING, GRAZING, BURNING, DISKING
- ▣ FOOD PLOTS
- ▣ WATER LEVEL MANIPULATION
- ▣ AUTHORIZED ONLY WHEN FUNCTIONS/VALUES ENHANCED




---

---

---

---

---


---

---

---

**EWP PROGRAM OBJECTIVES**

- ▣ Restore and protect floodplain functions
- ▣ Reduce federal disaster assistance
- ▣ Safeguard lives and property from floods




---

---

---

---

---

---

---

---

### EWP ENROLLMENT

- ▣ PERMANENT EASEMENT
- ▣ LESSER OF 100% OF GEOGRAPHIC RATE CAP, APPRAISAL, OR LANDOWNER OFFER
- ▣ 100% OF RESTORATION COSTS
- ▣ 75% OF COST OF REMOVING BUILDINGS




---

---

---

---

---

---

---

---

### EWP RESTORATION GOALS

- ▣ RE-ESTABLISH TOPOGRAPHIC DIVERSITY
- ▣ INCREASE DURATION OF INUNDATION AND SATURATION
- ▣ RE-ESTABLISH NATIVE VEGETATION




---

---

---

---

---

---

---

---

### EWP LANDOWNER RIGHTS

- ▣ Same reserved rights as in WRP
- ▣ Similar compatible use options as in WRP




---

---

---

---

---

---

---

---

**CRP PROGRAM OBJECTIVES**

- ❑ Protect nation's soil, water, and wildlife resources
- ❑ Improve water quality
- ❑ Enhance fish and wildlife habitat

---

---

---

---

---

---

---

---

**CRP WETLAND/BUFFER PRACTICES**

- ❑ Filter strips (CP21)
- ❑ Forested riparian buffer (CP22)
- ❑ Wetland restoration (CP23 and CP23A)
- ❑ Farmable Wetland pilot wetland (CP27)
- ❑ Farmable Wetland pilot wetland buffer (CP28)
- ❑ Marginal pastureland wetland buffer (CP30)
- ❑ Bottomland timber on wetlands (CP31)
- ❑ SAFE – Wetlands for Wildlife (CP38B)

---

---

---

---

---

---

---

---

**CONTINUOUS CRP**

- CROP HISTORY OR MARGINAL PASTURELAND
- 10 TO 15 YEAR CONTRACTS
- RENTAL RATE – SOIL TYPE
- 20% OF RENTAL RATE
- SIGNING INCENTIVE - \$100/AC
- PRACTICE INCENTIVE – 90% C/S INSTEAD OF 50%
- ANNUAL MAINTENANCE PAYMENT




---

---

---

---

---

---

---

---

### CRP WETLAND BUFFERS

#### FILTER STRIP (CP21)

- ▣ 20-120 FT. WIDTH
- ▣ NATIVE OR IMPROVED GRASSES
- ▣ NO HAYING OR GRAZING



#### FORESTED RIPARIAN (CP22)

- ▣ 35-180 FT. WIDTH
- ▣ 3 SPECIES TREES/SHRUBS
- ▣ 20 FT NWSG ZONE 3




---

---

---

---

---

---

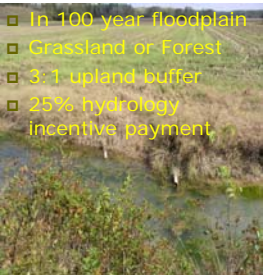
---

---

### CRP WETLAND RESTORATION

#### CP23

- ▣ In 100 year floodplain
- ▣ Grassland or Forest
- ▣ 3:1 upland buffer
- ▣ 25% hydrology incentive payment



#### CP23A

- ▣ Outside 100 yr floodplain
- ▣ Grassland or Forest
- ▣ 4:1 upland buffer
- ▣ 25% hydrology incentive payment




---

---

---

---

---

---

---

---

### BOTTOMLAND TIMBER ESTABLISHMENT ON WETLANDS (CP31)




---

---

---

---

---

---

---

---



**CURRENT TENNESSEE ENROLLMENT THROUGH FY2011**

<b>TN ALLOCATION (ACRES)</b>	<b>ENROLLMENT (ACRES)</b>
□ CP21 – NO LIMIT	□ CP21 – 9,231
□ CP22 – NO LIMIT	□ CP22 – 6,223
□ CP23 – 1,000	□ CP23 – 111
□ CP23A – 500	□ CP23A – 0
□ CP27/28 – 500	□ CP27/28 – 0
□ CP31 – 7,000	□ CP31 – 2,950

---

---

---

---

---

---

---

---

**CSP PROGRAM OBJECTIVES**

- REWARD GOOD CONSERVATION STEWARDS FOR CURRENT PERFORMANCE
- ENCOURAGE GOOD STEWARDS TO IMPLEMENT NEW MEASURES
- ENCOURAGE OTHERS TO BECOME GOOD STEWARDS BY PUSHING THEM THROUGH OTHER PROGRAMS TO QUALIFY FOR CSP

---

---

---

---

---

---

---

---

**CSP ELIGIBLE LANDS**

- CROPLAND (INCLUDING HAY)
- GRASSLANDS (PASTURE)
- NON-INDUSTRIAL PRIVATE FOREST LAND
- CONSIDERED ADEQUATELY TREATED BASED ON 3-5 TARGETED RESOURCE CONCERNS WITH LITTLE VISIBLE EROSION

---

---

---

---

---

---

---

---

**CSP PAYMENTS**

- ❑ ANNUAL STEWARDSHIP PAYMENT FOR 5 YEARS
- ❑ ANNUAL ENHANCEMENT PAYMENT BASED ON NUMBER OF ENHANCEMENTS AND BENEFITS TO RESOURCES
- ❑ \$40,000 PAYMENT LIMIT PER YEAR
- ❑ \$200,000 PAYMENT LIMIT PER CONTRACT

---

---

---

---

---

---

---

---

**WETLAND ENHANCEMENTS**

- ❑ Drainage water management for seasonal wildlife habitat
- ❑ Defer crop production on temporary and seasonal wetlands
- ❑ Extend existing filter strip
- ❑ Extend existing riparian forest buffer
- ❑ Extend existing riparian herbaceous cover
- ❑ Shallow water habitat
- ❑ Non-forested riparian zone enhancement
- ❑ Riparian forest buffer management
- ❑ Wildlife corridors

---

---

---

---

---

---

---

---



**CSP – Shallow Water Enhancement**

One cluster of at least 2 per 20 acres of Ag. Land. Each vernal pool at least 0.1 acre up to 0.5 acre in size.

---

---

---

---

---

---

---

---



**CSP – Defer crop production on temporary and seasonal wetlands**

Defer crop production until after spring migratory bird season. No disturbance from November 1 or immediately after crop harvest until June 1.

---

---

---

---

---

---

---

---

**WHIP PROGRAM OBJECTIVES**

- ❑ RESTORE PC ACRES TO WETLANDS
- ❑ CREATE WETLANDS ON I1W AND I11W SOILS



---

---

---

---

---

---

---

---

**WHIP PROGRAM COMPONENTS**

- ❑ 5-10 YEAR CONTRACTS
- ❑ 75-90% COST SHARE
- ❑ Eligible components tree/NWSG planting, dike, tile break, shallow excavation, water control structures
- ❑ Water control structures closed Oct 1- March 1



---

---

---

---

---

---

---

---

**THE UNLISTED PROGRAM – THE WETLAND  
CONSERVATION PROVISION OF THE FARM BILL**

- ❑ 1985 FOOD SECURITY ACT,  
AS AMENDED
- ❑ PROTECTS WETLANDS FROM  
CONVERSION TO CROPS BY  
USDA PROGRAM  
PARTICIPANTS
- ❑ ELIMINATES PARTICIPATION  
IN MOST OTHER USDA  
PROGRAMS UNLESS  
COMPLIANT



---

---

---

---

---

---

---

---