

# IMPACTS OF A 4-LANE HIGHWAY WITH WILDLIFE UNDERPASSES ON BLACK BEAR SPATIAL ECOLOGY IN EASTERN NORTH CAROLINA



Matthew McCollister, M. S. Candidate  
Department of Forestry, Wildlife, and Fisheries  
University of Tennessee



---

---

---

---

---

---

---

---

## Introduction

- Growing infrastructure network
- Potential to affect large carnivore species
  - Vehicle collisions
  - Low reproductive rates

---

---

---

---

---

---

---

---

## Introduction

- Effects of highways on wildlife
  - Direct mortality
  - Direct habitat loss
  - Displacement and avoidance
  - Habitat fragmentation
  - Reduced genetic exchange
  - Associated human development

---

---

---

---

---

---

---

---

## Introduction

- Mitigate impacts

- Wildlife crossing structures

- Speed limits and warning devices



---

---

---

---

---

---

---

---

## Justification

- Human development will continue
- Need to better understand
  - Impacts of highways
  - Effectiveness of mitigation measures
- Umbrella species (Simberloff 1999)



---

---

---

---

---

---

---

---

## Objectives



- Determine if a change in spatial ecology is present
  - Before and after highway construction
- Determine the effectiveness of wildlife underpasses

---

---

---

---

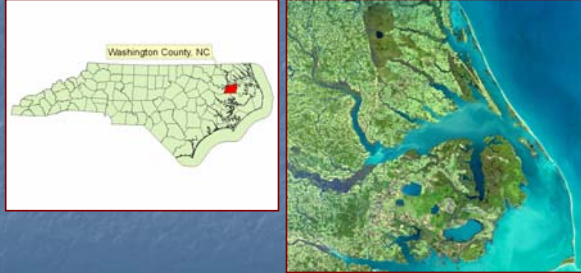
---

---

---

---

## Study Area



---

---

---

---

---

---

---

---

## Study Area



---

---

---

---

---

---

---

---

## Study Area

- Agricultural crops
- Forested land
- Limited human development



---

---

---

---

---

---

---

---

## Methods

- **Livetrapping**

- Foot snares

- Culvert trap



---

---

---

---

---

---

---

---

## Methods

- **Radiocollars**

- Females >55 kg

- Males >90 kg



---

---

---

---

---

---

---

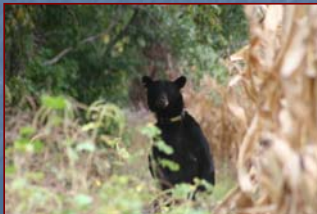
---

## Methods

- **Radiotelemetry**

- Daily and hourly locations

- Telemetry error



---

---

---

---

---

---

---

---

## Methods

- Calculation of Spatial Variables

- Home-range analysis
- Short-term movements

---

---

---

---

---

---

---

---

## Methods

- Habitat analysis

- Habitat selection and modeling
- Habitat variables

---

---

---

---

---

---

---

---

## Methods

- Before-After Control-Impact Study design

- Assess treatment effects



---

---

---

---

---

---

---

---

## Methods

- Analysis of variance with repeated measures
  - Between-subjects factor
  - Within-subjects factor
  - Additional factors

---

---

---

---

---

---

---

---

## Methods

- Track, Camera, and Road Kill Surveys
  - Track counts
  - Camera systems
  - Roadkill survey



---

---

---

---

---

---

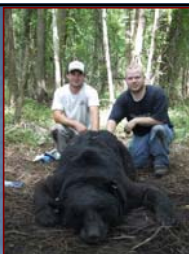
---

---

## Preliminary Results

### ■ Trapping

- Treatment area
- Control area



### ■ Telemetry

- Treatment area
- Control area



---

---

---

---

---

---

---

---

## Preliminary Results



- Highway monitoring

-198 road mortalities

-3,622 animal crossings



---

---

---

---

---

---

---

---

## Acknowledgments

- Frank van Manen, USGS: Southern Appalachian Research Branch
- University of Tennessee: Department of Forestry, Wildlife, and Fisheries
- North Carolina Wildlife Resources Commission; Mark Jones
- North Carolina Department of Transportation
- Weyerhaeuser Company

---

---

---

---

---

---

---

---

## Thanks to

- Jeremy and Tonya Nicholson, John Harrelson, Ben Augustine, Rupert Medford, Debbie Mauney, and Joey Hinton



---

---

---

---

---

---

---

---