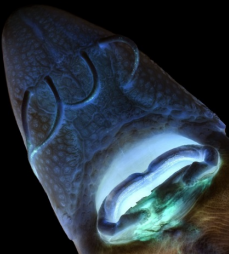


**DIET OF AND PREY
AVAILABILITY FOR
REINTRODUCED JUVENILE
LAKE STURGEON
(*Acipenser fulvescens*)
IN THE UPPER TENNESSEE
RIVER BASIN**
Todd Amacker
October 14th, 2015 | 12:20 PM | Plant Biotech. 160



THE LAKE STURGEON




Acipenser fulvescens
Joseph Huet 1868

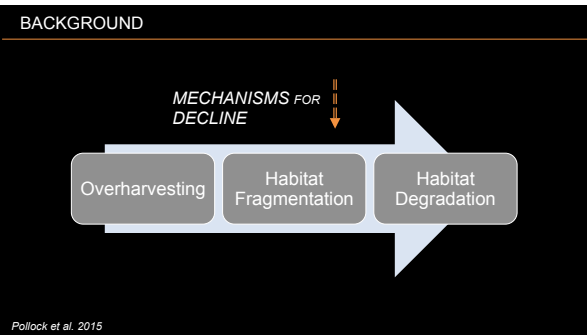
Harkness and Dymond 1961

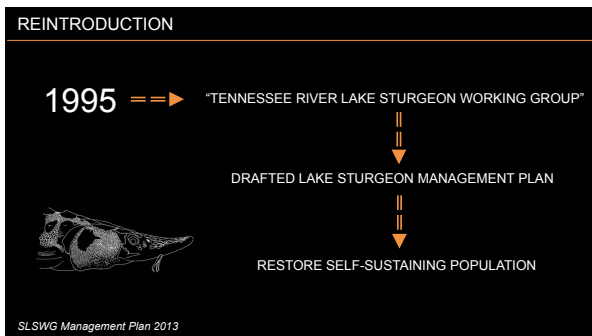
ECOMORPHOLOGY

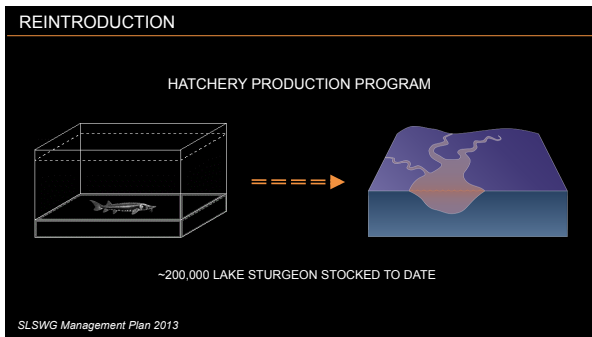
A "Supra-benthic cruiser" with unique adaptations...

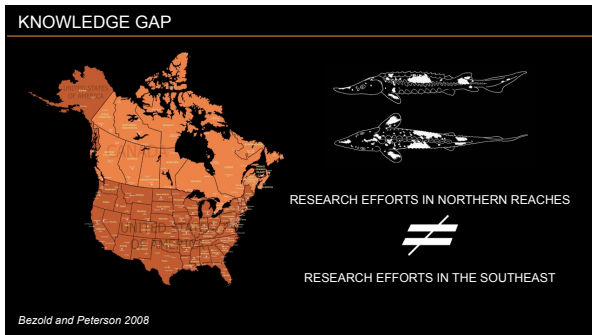


Peterson and Vecsei 2004






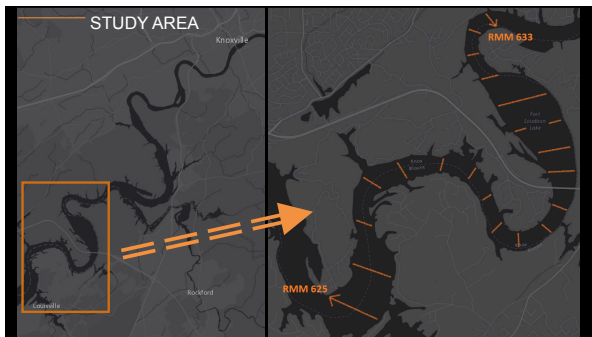




IN A NUTSHELL:

What's available for them to eat
vs
What they are *actually* eating
and
Why does it matter?



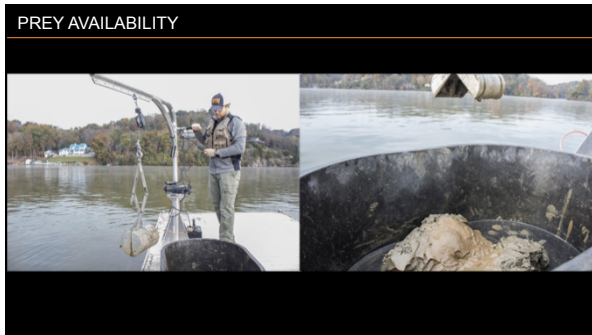


Why this study area?



C. Saldak, unpublished data





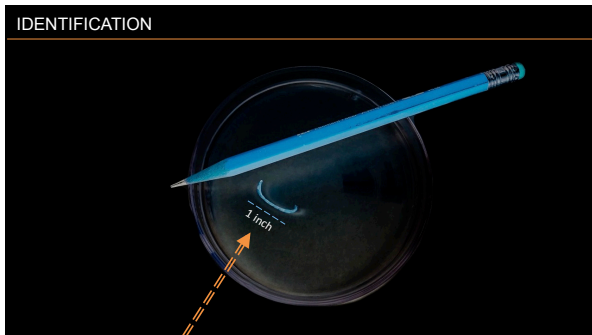


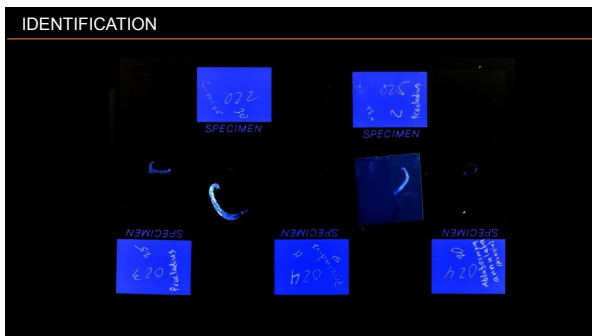
HARD SUBSTRATE

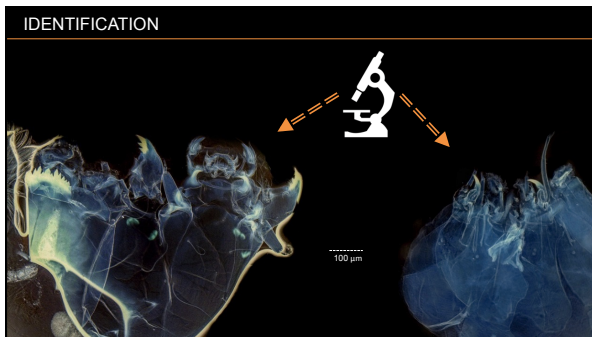


IDENTIFICATION

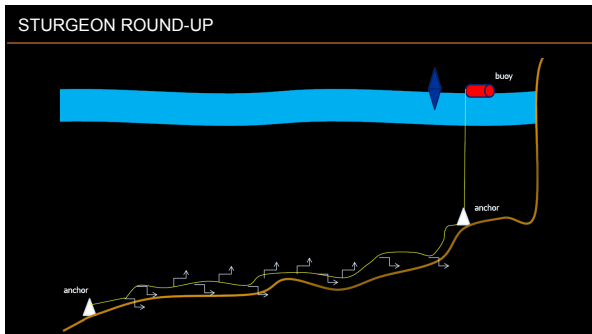


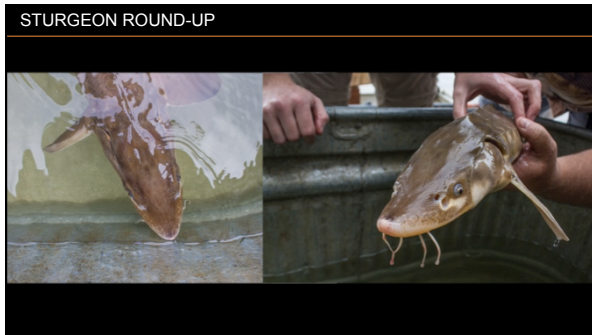












GASTRIC LAVAGE



COLONIC FLUSH



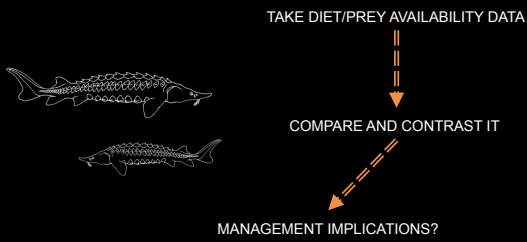
COLONIC FLUSH



COLONIC FLUSH



ANALYSIS



ACKNOWLEDGEMENTS



CITATIONS

- 1) Bezold, J. and D.L. Peterson, 2008. Assessment of lake sturgeon reintroduction in the Coosa River system, Georgia–Alabama. American Fisheries Society, Symposium 62, Bethesda, Maryland.
- 2) Harkness, W.J.K., and J.R. Dymond. 1961. The lake sturgeon. Ontario Department of Lands and Forests, Toronto.
- 3) Peterson, D.L., and P. Vecsei. 2004. Sturgeons and paddlefish of North America. Kluwer Academic Publishers, The Netherlands.
- 4) Pollock, M.S., M. Carr, N.M. Kreitals, and I.D. Phillips. 2015. Review of a species in peril: what we do not know about lake sturgeon may kill them. Environmental Reviews 23(1): 30-43.
- 5) Southeastern Lake Sturgeon Working Group. 2013. Lake sturgeon management plan for the Tennessee and Cumberland Rivers. U.S. Fish and Wildlife Service, Asheville, NC.

QUESTIONS?



>>>Todd Amacker tamacker@vols.utk.edu McCord Hall

CITIZEN SCIENCE

iCaughtOne!
The Southeast's Lake Sturgeon Reporting System

This citizen science project involves recreational anglers like you aiding the recovery of threatened Lake Sturgeon in the American Southeast. Have you caught this large, strange-looking fin in the Tennessee River Basin? If so...

IDENTIFY IT. COLLECT IMPORTANT DATA. REPORT IT.

Click to report your catch!
