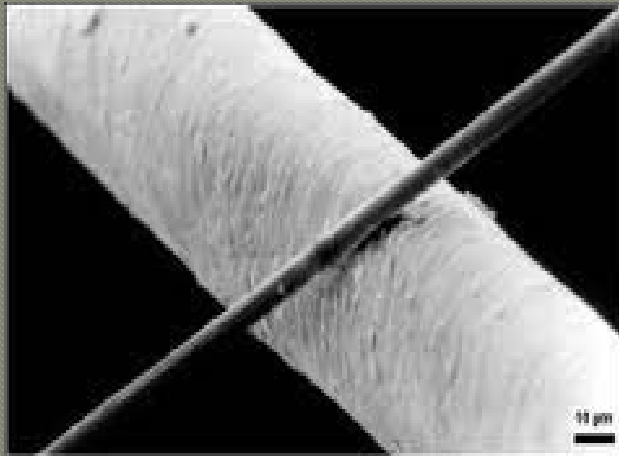
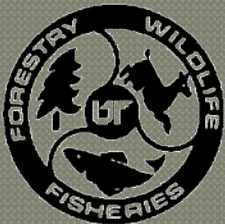


Laboratory Scale Production of Lignin-based Carbon Fiber isolated by Solvent Fractionation

Wednesday, 5 October 2011, 12:20 pm, 160 Plant Biotechnology



Stacy Edward Warwick
M.S. Candidate



Center for Renewable Carbon
Dept. of Forestry, Wildlife and Fisheries
University of Tennessee, Knoxville

