


---

---

---

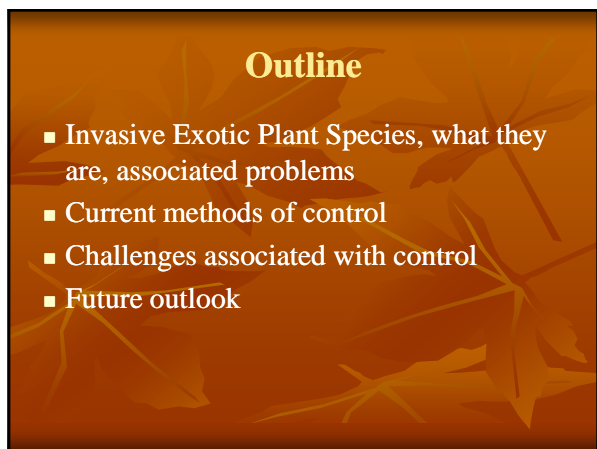
---

---

---

---

---




---

---

---

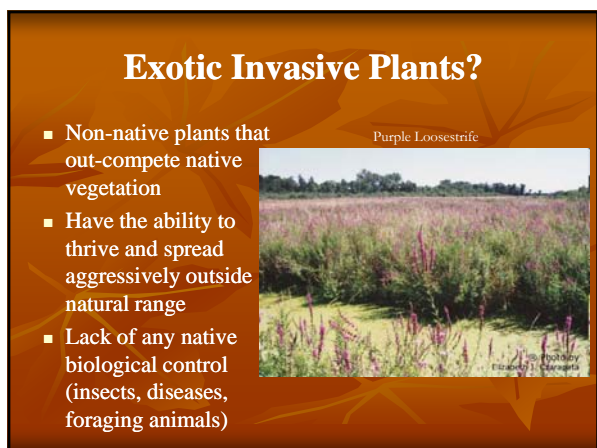
---

---

---

---

---




---

---

---

---

---

---

---

---





---

---

---

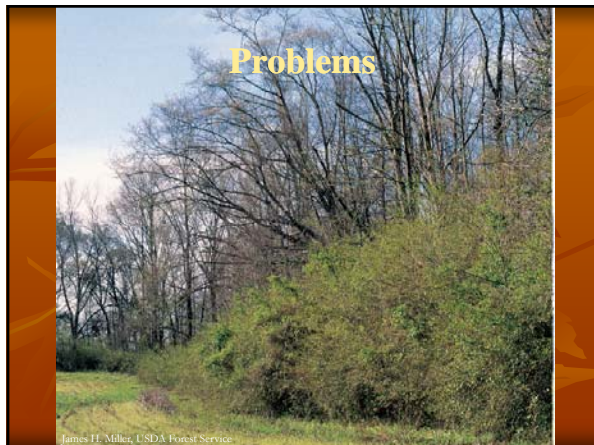
---

---

---

---

---



---

---

---

---

---

---

---

---

### Methods of Control

- Prevention
- Mechanical
- Chemical
- Biological

---

---

---

---

---

---

---

---

## Prevention

- Stopping it before it starts
- Washing equipment
- Using clean seed, mulch, soil, etc.
- Killing plants before they become established
- Can be very difficult

---

---

---

---

---

---

---

---

## Mechanical

- Pulling weeds
- Mowing/cutting
- Burning
- Can be expensive for large areas




---

---

---

---

---

---

---

---

## Chemical

- Herbicides
- Effective
- Good for large infestations
- Economical




---

---

---

---

---

---

---

---

## Biological

- Not used very often
- Can cause new exotics to be introduced
- Not always effective
- Expensive to develop
- Slow to work

---

---

---

---

---

---

---

---

## Why are they so hard to Control? Plant Side

- The nature of the plant
  - High plasticity
  - Aggressive
  - Rapid growth
- Seeds
  - dispersal
  - seedbed




---

---

---

---

---

---

---

---

## Why are they so hard to Control? Human Side

- Lack of knowledge
- Failure to care
- Neighbors
- MONEY




---

---

---

---

---

---

---

---



## Future outlook

- Exotics are here to stay
- Best case scenario = suppression




---

---

---

---

---

---

---

---

## Sources

- The United States National Arboretum  
<http://www.usna.usda.gov/Gardens/invasives.html>
- Plant Conservation Alliance's Alien Plant Working Group  
<http://www.nps.gov/plants/ALIEN/fact/hehe1.htm>

---

---

---

---

---

---

---

---




---

---

---

---

---

---

---

---