





Hellbender *Cryptobranchus alleganiensis*





Hellbender *Cryptobranchus alleganiensis*

Mudpuppy *Necturus maculosus*



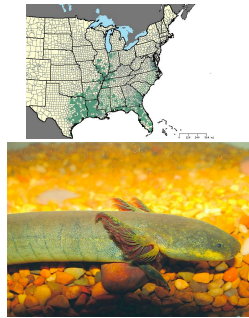
Mudpuppy *Necturus maculosus*

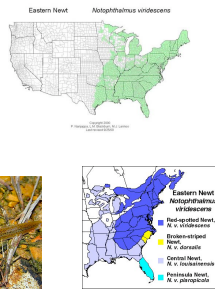
Three-toed Amphiuma
Amphiuma tridactylum



Lesser Siren
Siren intermedia



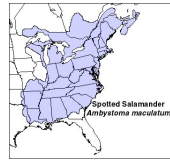
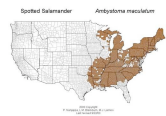
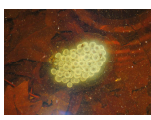
Eastern Newt
Notophthalmus viridescens



Streamside Salamander *Ambystoma barbouri*



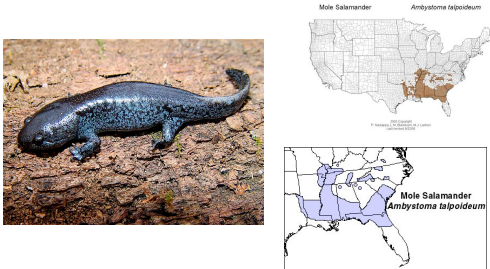
Spotted Salamander *Ambystoma maculatum*



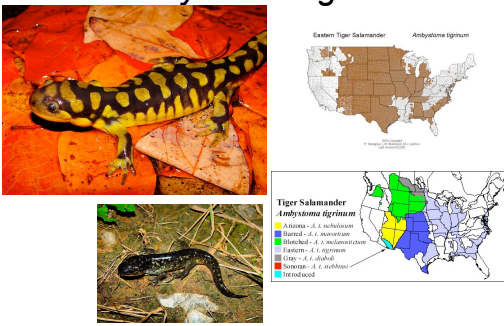
Marbled Salamander *Ambystoma opacum*



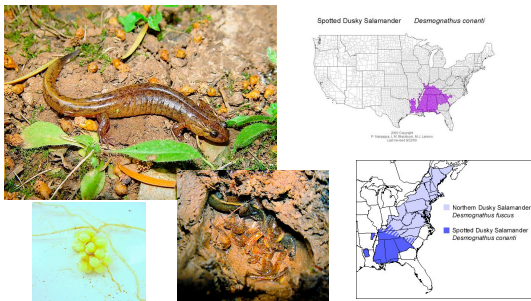
Mole Salamander *Ambystoma talpoideum*



Tiger Salamander *Ambystoma tigrinum*



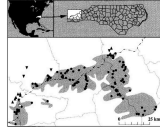
Spotted Dusky Salamander *Desmognathus conanti*



Santeetlah Dusky Salamander *Desmognathus santeetlah*



Santeetlah Dusky Salamander *Desmognathus santeetlah*

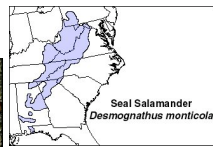


MAP. Distribution of *Desmognathus santeetlah*. The dark shaded area is the range of the Great Smoky and Great Smoky Mountains. In several ranges, adults records for hybrids between *D. santeetlah* and *D. monticola*. Shaded collection areas show the 1990s collection.

Seal Salamander *Desmognathus monticola*



Seal Salamander *Desmognathus monticola*



©Chris Leary

Black-bellied Salamander *Desmognathus quadramaculatus*



Allegheny Mountain Dusky Salamander
Desmognathus ochropeus



Black-bellied Salamander
Desmognathus quadramaculatus



Shovel-nosed Salamander *Desmognathus marmoratus*



Shovel-nosed Salamander *Desmognathus marmoratus*



Ocoee Salamander *Desmognathus ocoee*



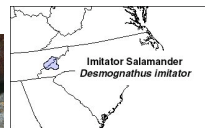
Ocoee Salamander
Desmognathus ocoee



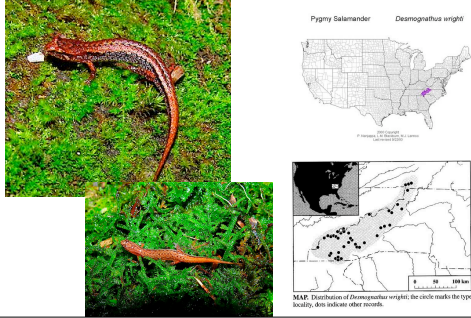
Imitator Salamander *Desmognathus imitator*



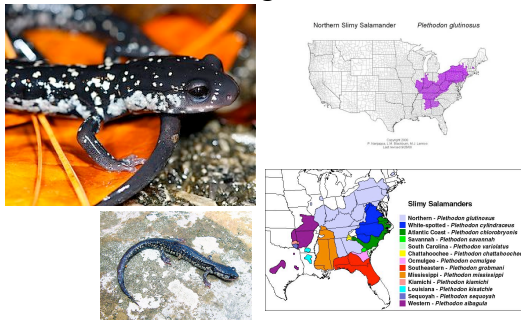
Imitator Salamander *Desmognathus imitator*



Pygmy Salamander *Desmognathus wrighti*



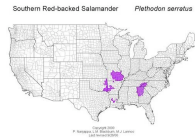
Northern Slimy Salamander *Plethodon glutinosus*



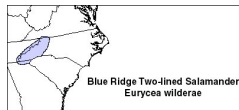
Red-cheeked Salamander *Plethodon jordani*



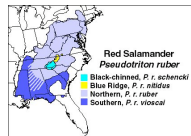
Southern Red-backed Salamander
Plethodon serratus



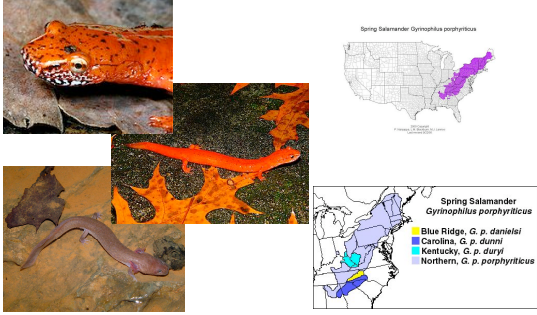
Blue Ridge Two-lined Salamander
Eurycea wilderae



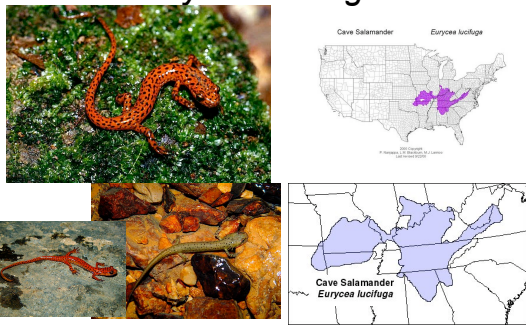
Red Salamander
Pseudotriton ruber



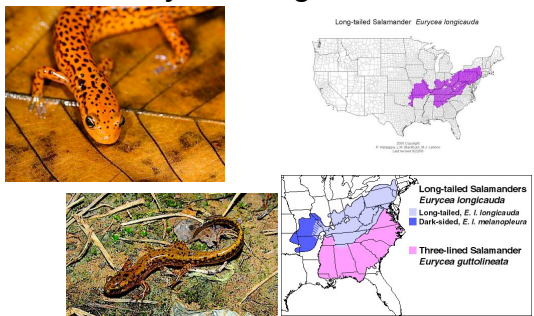
Blue Ridge Spring Salamander *Gyrinophilus porphyriticus danielsi*



Cave Salamander *Eurycea lucifuga*



Longtail Salamander *Eurycea longicauda*



Tennessee Cave Salamander *Gyrinophilus palleucus*



Yonahlossee Salamander *Plethodon yonahlossee*

