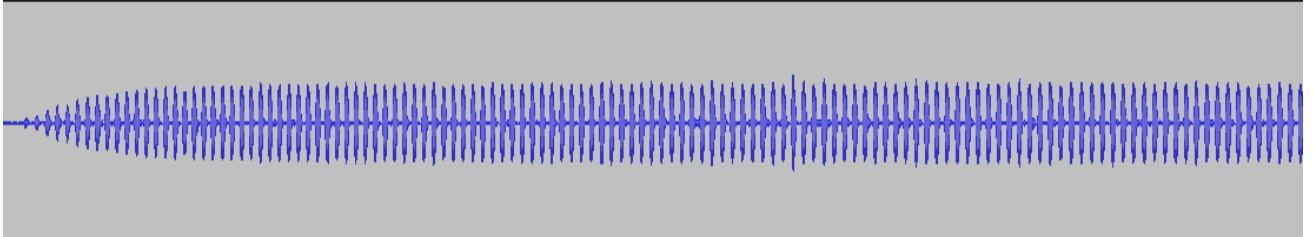
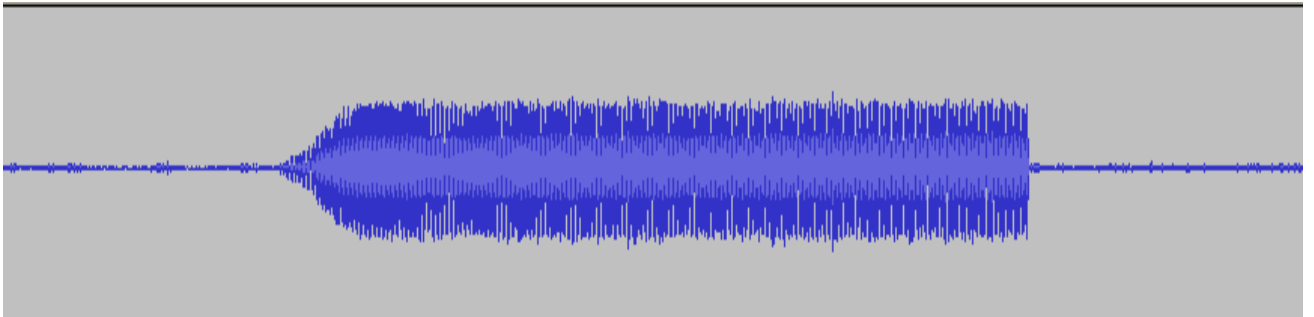


**Anuran Sonograms**  
**Amphibian Ecology and Conservation**

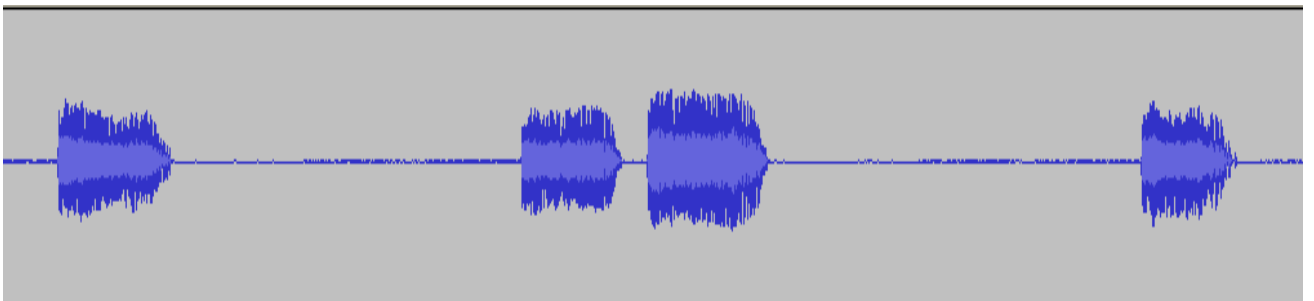
(1) American toad



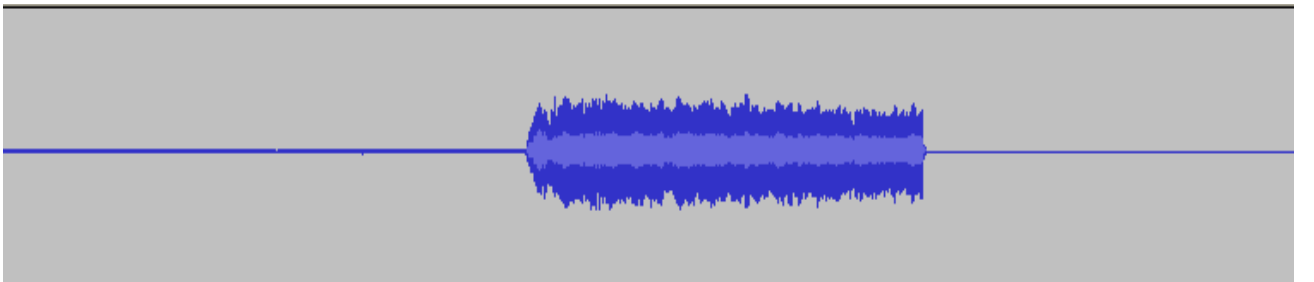
(2) Fowler's toad



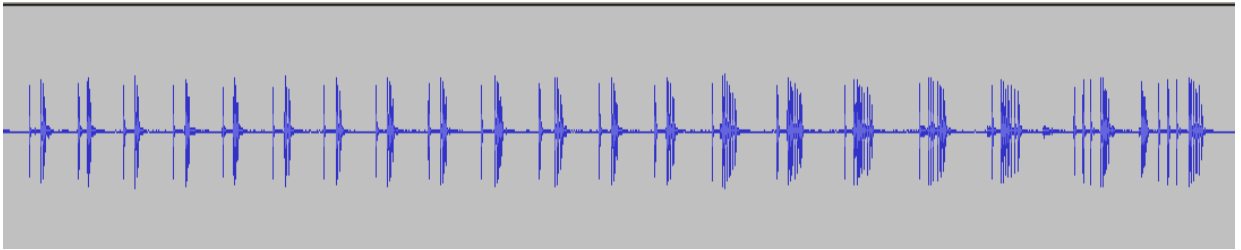
(3) eastern spadefoot



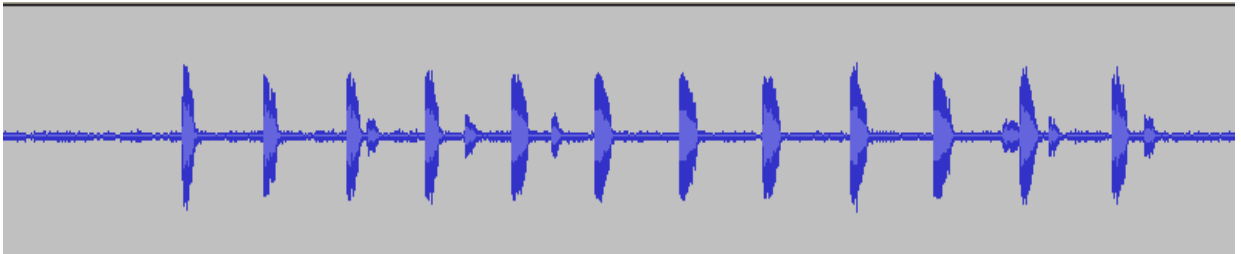
(4) eastern narrow-mouthed toad



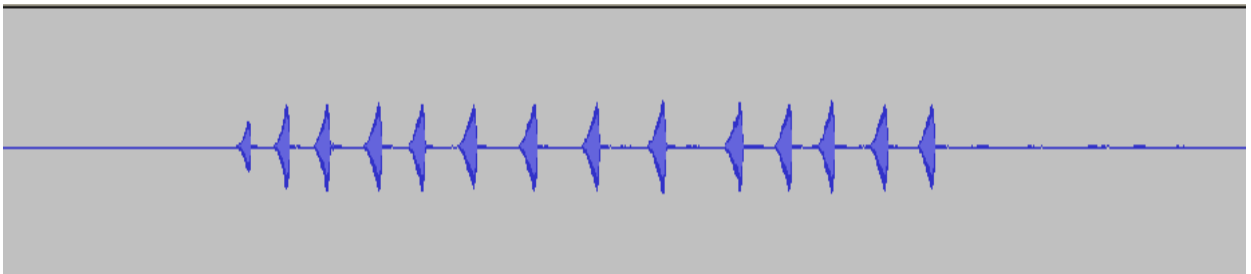
(5) northern cricket frog



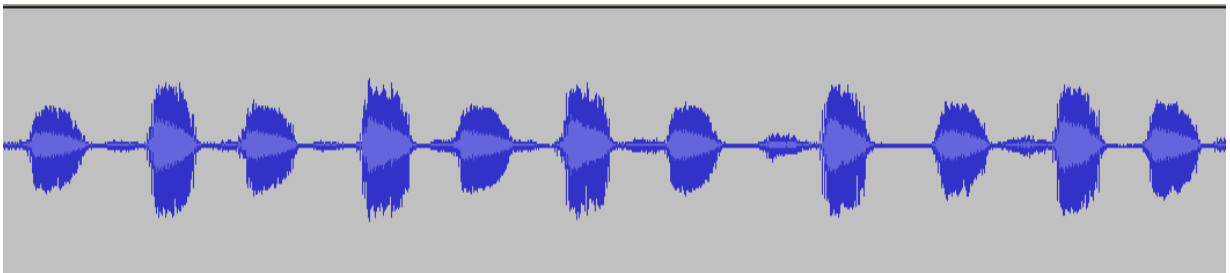
(6) southern cricket frog



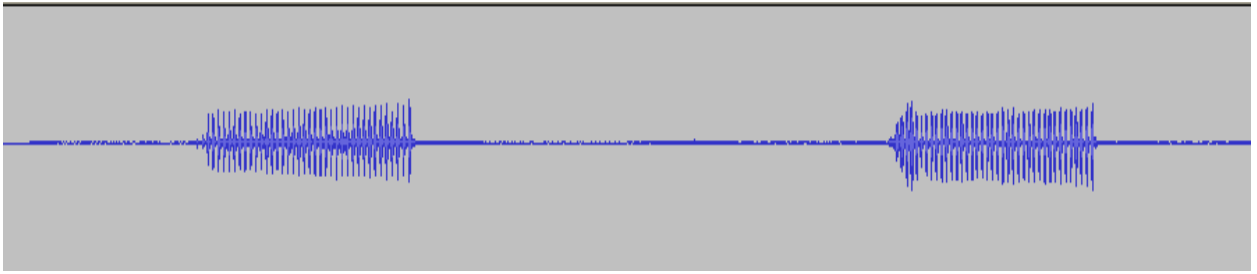
(7) bird-voiced treefrog



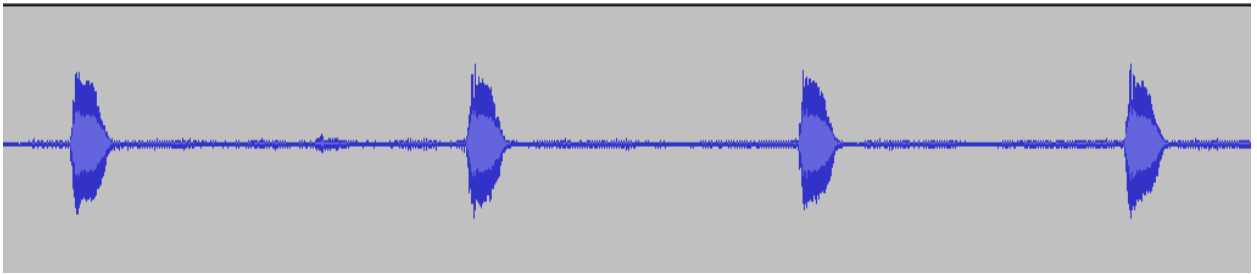
(8) green treefrog



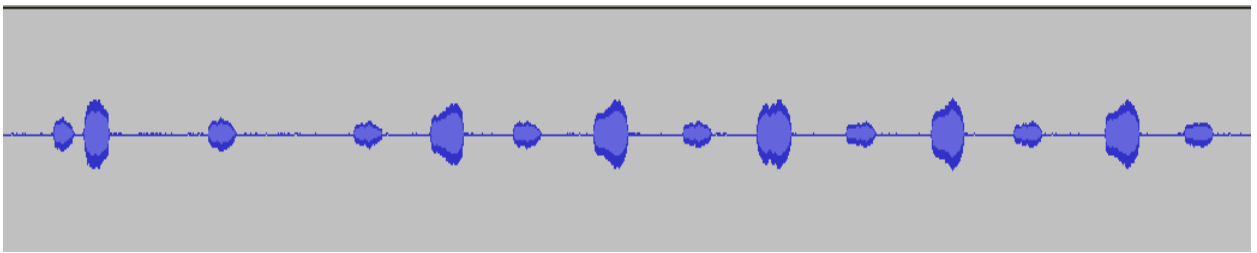
(9) Cope's gray treefrog



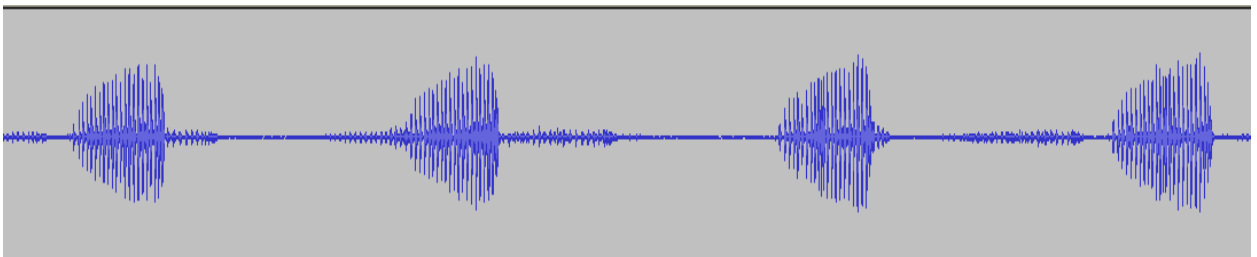
(10) barking treefrog



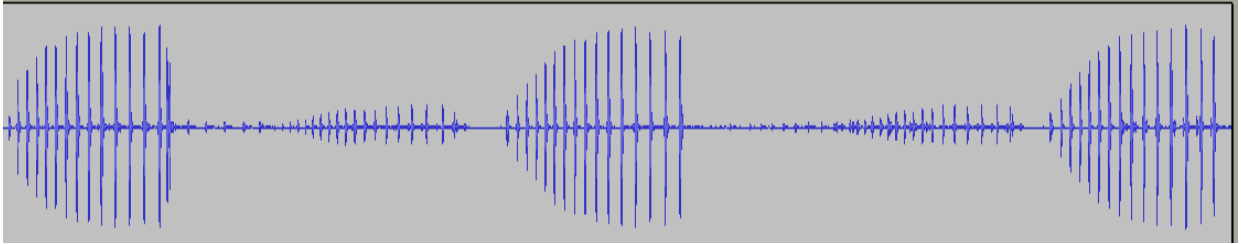
(11) spring peeper



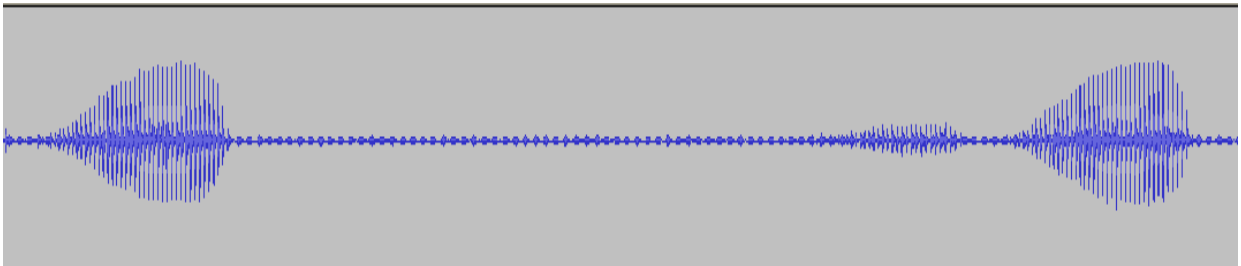
(12) mountain chorus frog



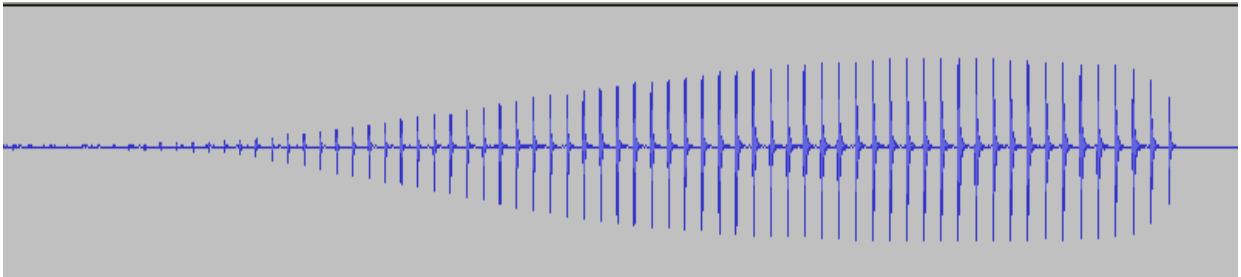
(13) southeastern chorus frog



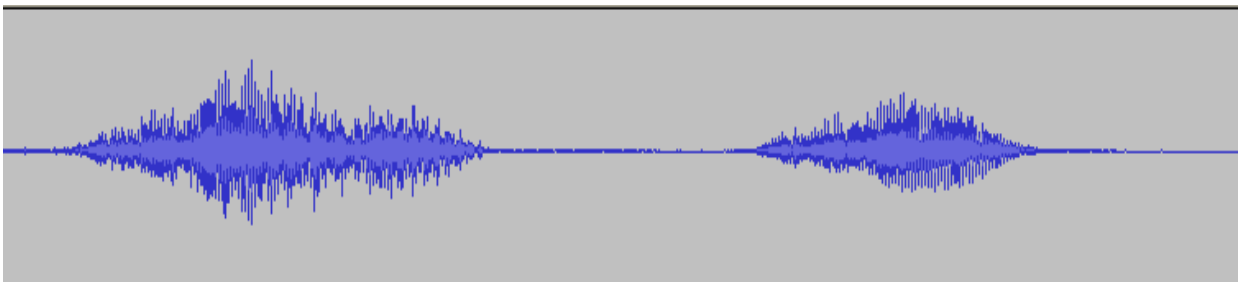
(14) crawfish frog



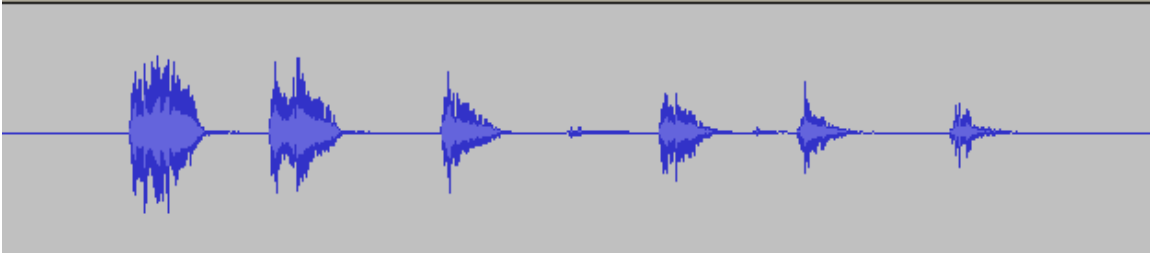
(15) gopher frog



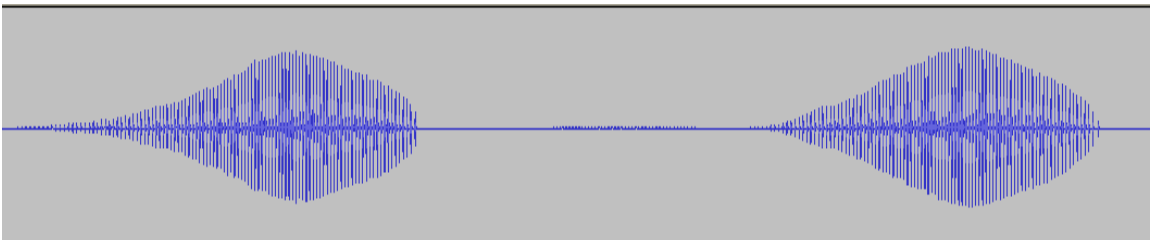
(16) American bullfrog



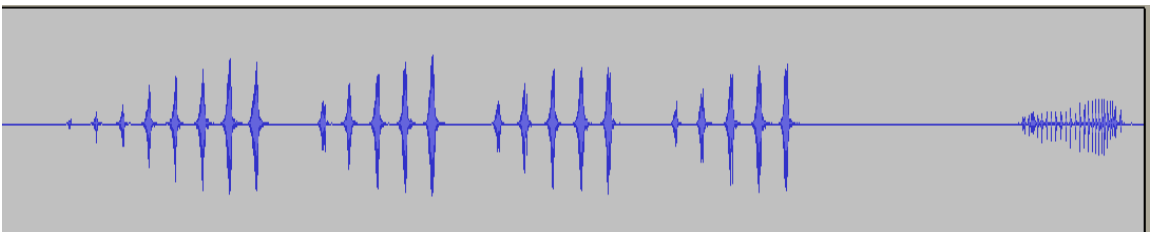
(17) green frog



(18) pickerel frog



(19) southern leopard frog



(20) wood frog

