
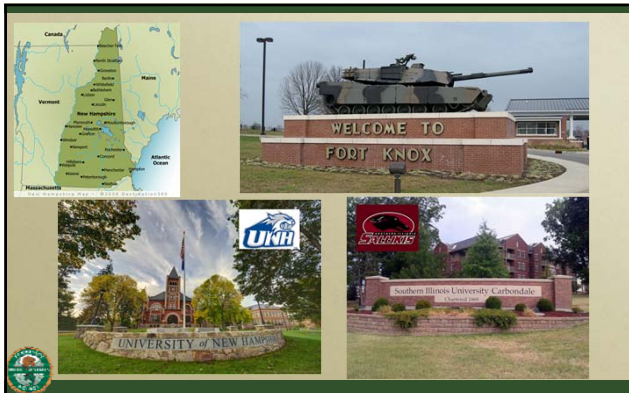


This slide features a large photograph of a dense flock of waterfowl in a body of water. To the right is a snippet from the Federal Register, dated August 6, 2015, regarding the Department of the Interior. The slide includes the Tennessee Wildlife Resources Agency logo and the title "Waterfowl Counts and Regulation Setting". Below the title is the name "Jamie C. Feddersen, Certified Wildlife Biologist® Waterfowl Program Leader".

How I will bore you

- Talking about me
- Talking about what you need to know
- Talking about why/how we count waterfowl
- Talking about why/how we set regulations
- Quiz (so maybe you'll pay attention)






A collage of four images: a map of the Eastern United States showing waterfowl migration routes; a "WELCOME TO FORT KNOX" sign with a tank on top; a "UNH" sign in front of a building; and a "Southern Illinois University Carbondale" sign.






Stuff You Need to Know

- Breeding Population Estimate (Bpop)
- Adaptive Harvest Management (AHM)
- Flyway Technical Sections and Councils
- Service Regulations Committee
- Federal Register



Waterfowl Bpop and Habitat Surveys



A map of North America, including Alaska, Canada, and the United States, showing various regions shaded in green and yellow. These shaded areas represent waterfowl breeding populations and habitat surveys. A small circular logo is in the bottom left corner of the slide.

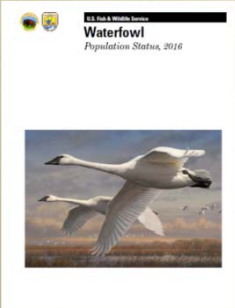
Counting Ducks and Ponds



A photograph of a red and white seaplane with two floats, moving across a body of water, creating a splash. The background shows a dense forest. A small circular logo is in the bottom left corner of the slide.

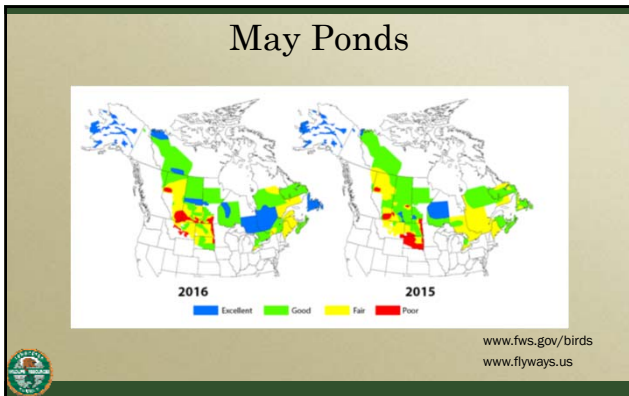
www.flyways.us/node/25865

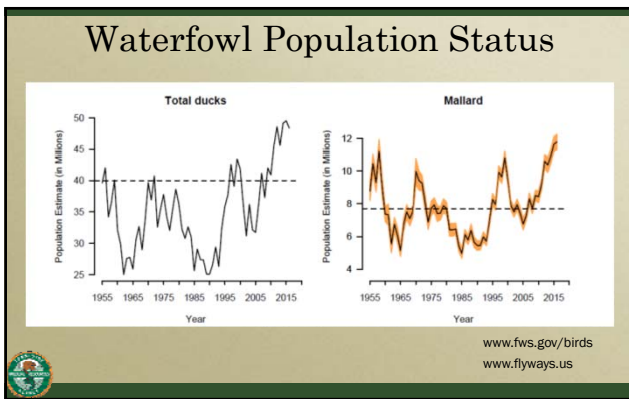
Waterfowl Population Status



The cover of a report titled "Waterfowl Population Status, 2016" from the U.S. Fish & Wildlife Service. It features a photograph of two swans in flight over a field. A small circular logo is in the bottom left corner of the slide.

www.fws.gov/birds
www.flyways.us





Waterfowl Population Status

2016 WATERFOWL SURVEY <small>ducks.org/ducknumbers</small>				
Species	2016	2015	% Change from 2015	% Change from 2014
Mallard	11,793	11,445	+3	+11
Coot	5,712	4,824	+19	+100
American Wigeon	5,411	5,997	-10	-11
Green-winged teal	4,376	4,881	-10	+100
Blue-winged teal	4,589	4,347	+11	+14
Northern shoveler	3,967	4,201	-6	+10
Northern pintail	3,618	3,953	-9	+8
Redhead	1,289	1,196	+8	+11
Canvasback	0,774	6,767	-9	+10
Scaup	4,992	4,391	+14	0
Total Ducks	44,463	47,122	-6	+10
May Ponds (1/1000)	5,412	6,368	-14	-4

www.ducks.org

Adaptive Harvest Management



www.fws.gov/birds

Regulatory Alternatives

Table 2 – Regulatory alternatives for the 2017 duck-hunting season.

Regulation	Flyway			
	Atlantic ^a	Mississippi	Central ^b	Pacific ^c
Shooting Hours	one-half hour before sunrise to sunset			
Framework Dates				
Restrictive	Oct 1-Jan 20	Saturday nearest Oct 1 to the Sunday nearest Jan 20		
Moderate	Saturday nearest September 24 to the last Sunday in January			
Liberal				
Season Length (days)				
Restrictive	30	30	39	60
Moderate	45	45	60	86
Liberal	60	60	74	107
Bag Limit (total / mallard / hen mallard)				
Restrictive	3 / 3 / 1	3 / 2 / 1	3 / 3 / 1	4 / 3 / 1
Moderate	6 / 4 / 2	6 / 4 / 1	6 / 5 / 1	7 / 5 / 2
Liberal	6 / 4 / 2	6 / 4 / 2	6 / 5 / 2	7 / 7 / 2

www.fws.gov/birds

Optimal Regulatory Strategy

BPOF ^a	Ponds ^b																		
	1.5	1.75	2	2.25	2.5	2.75	3	3.25	3.5	3.75	4	4.25	4.5	4.75	5	5.25	5.5	5.75	6
<4.5	C	C	C	C	C	C	C	C	C	C	C	C	C	C	C	C	C	C	C
4.75	R	R	R	R	R	R	R	R	R	R	R	R	R	R	R	R	R	R	R
5	R	R	R	R	R	R	R	R	R	R	R	R	R	R	R	R	R	R	R
5.25	R	R	R	R	R	R	R	R	R	R	R	R	R	R	R	R	R	R	R
5.5	R	R	R	R	R	R	R	R	R	R	R	R	R	R	R	R	R	R	R
5.75	R	R	R	R	R	R	R	R	R	R	R	R	R	R	R	R	R	R	R
6	R	R	R	R	R	R	R	R	R	R	R	R	R	R	R	R	R	R	R
6.25	R	R	R	R	R	R	R	R	R	R	R	R	R	R	R	R	R	R	R
6.5	R	R	R	R	R	R	R	R	R	R	R	R	R	R	R	R	M	L	L
6.75	R	R	R	R	R	R	R	R	R	R	R	R	R	M	L	L	L	L	L
7	R	R	R	R	R	R	R	R	R	R	M	L	L	L	L	L	L	L	L
7.25	R	R	R	R	R	R	M	L	L	L	L	L	L	L	L	L	L	L	L
7.5	R	R	R	R	R	M	L	L	L	L	L	L	L	L	L	L	L	L	L
7.75	R	R	R	M	L	L	L	L	L	L	L	L	L	L	L	L	L	L	L
8	R	M	L	L	L	L	L	L	L	L	L	L	L	L	L	L	L	L	L
8.25	M	L	L	L	L	L	L	L	L	L	L	L	L	L	L	L	L	L	L
> 8.5	L	L	L	L	L	L	L	L	L	L	L	L	L	L	L	L	L	L	L

^a C = closed season, R = restrictive, M = moderate, L = liberal.

www.fws.gov/birds

Regulatory Alternatives

Table 2 – Regulatory alternatives for the 2017 duck-hunting season.

Regulation	Flyway			
	Atlantic ^a	Mississippi	Central ^b	Pacific ^c
Shooting Hours	one-half hour before sunrise to sunset			
Framework Dates				
Restrictive	Oct 1-Jan 20			
Moderate	Saturday nearest Oct 1 to the Sunday nearest Jan 20			
Liberal	Saturday nearest September 24 to the last Sunday in January			
Season Length (days)				
Restrictive	30	30	39	60
Moderate	45	45	60	86
Liberal	60	60	74	107
Bag Limit (total / mallard / hen mallard)				
Restrictive	3 / 3 / 1	3 / 2 / 1	3 / 3 / 1	4 / 3 / 1
Moderate	6 / 4 / 2	6 / 4 / 1	6 / 5 / 1	7 / 5 / 2
Liberal	6 / 4 / 2	6 / 4 / 2	6 / 5 / 2	7 / 7 / 2

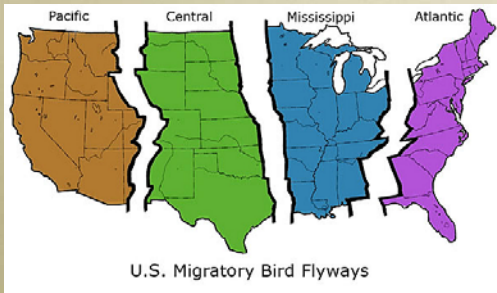
www.fws.gov/birds

Flyways



www.flyways.us

Administrative Flyways



U.S. Migratory Bird Flyways

